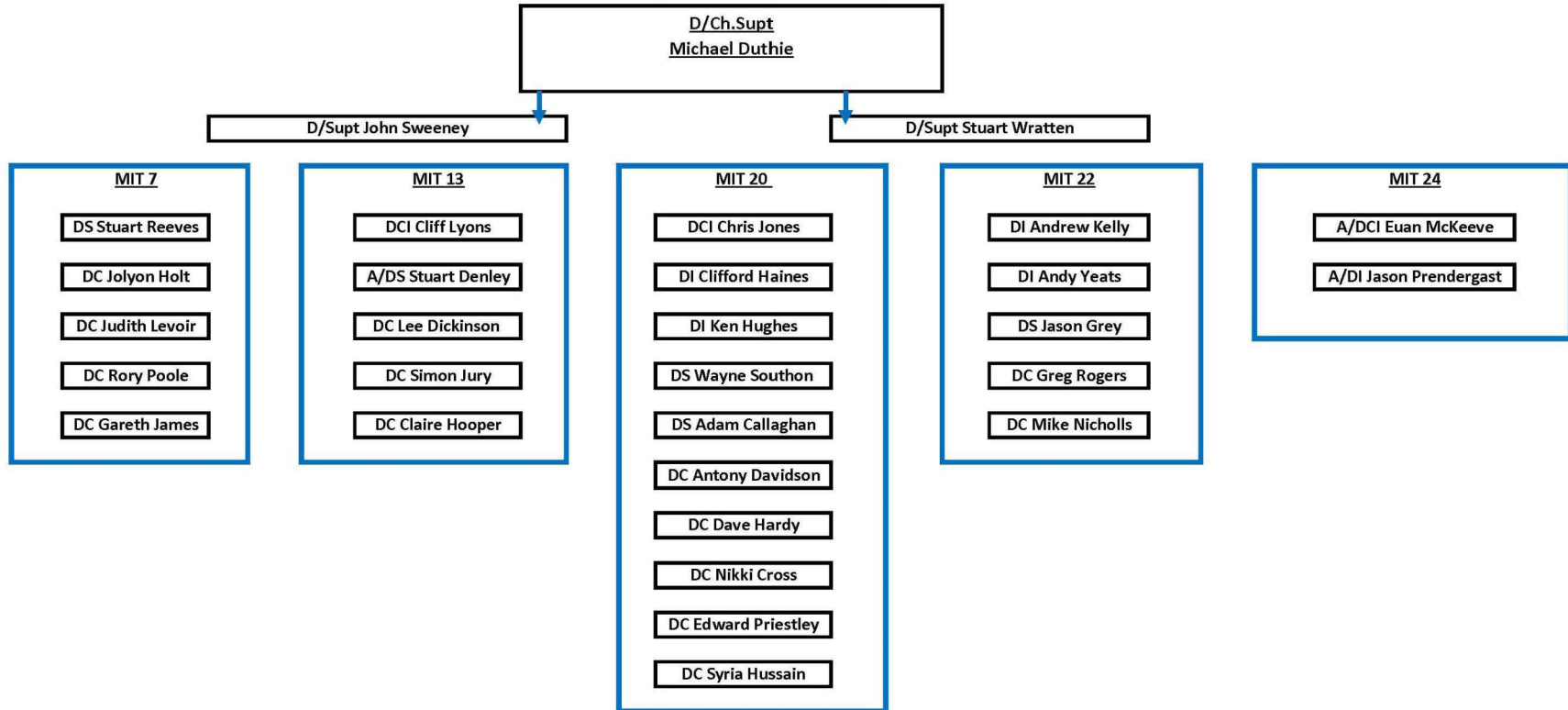


SC&O1 Command Officers Involved in these matters



**Note:**

This chart is intended to include the SC&O1 officers who may give evidence or be referred to in the evidence at the inquests. It does not include all of the officers of the SC&O1 Command. The blue boxes at the bottom level list officers who may give evidence or be referred to in the evidence at the inquests from five different MITs. They are organised in rank order. Each of the blue boxes does not include all of the officers of the MIT in question, or all of the officers of the relevant shift of the MIT in question.

Officers are organised in boxes by rank. The officers in a particular box are not in a direct reporting line to the officers in the box above in every case.